



Restore Points

going back to a time

when your computer was working better

Restore Point allows the user to revert their computer's state (including system files, installed applications, Registry, & system settings) to a previous point in time, which can be used to recover from system malfunctions or other problems

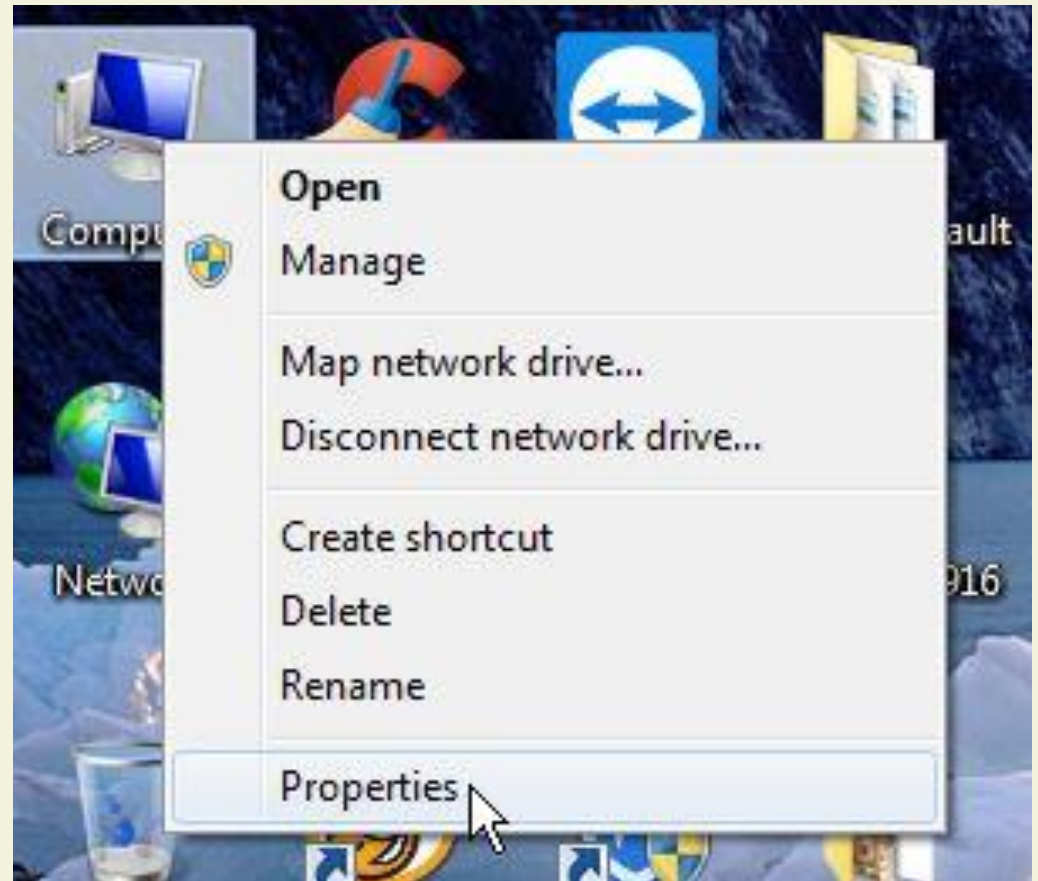
John Lorens

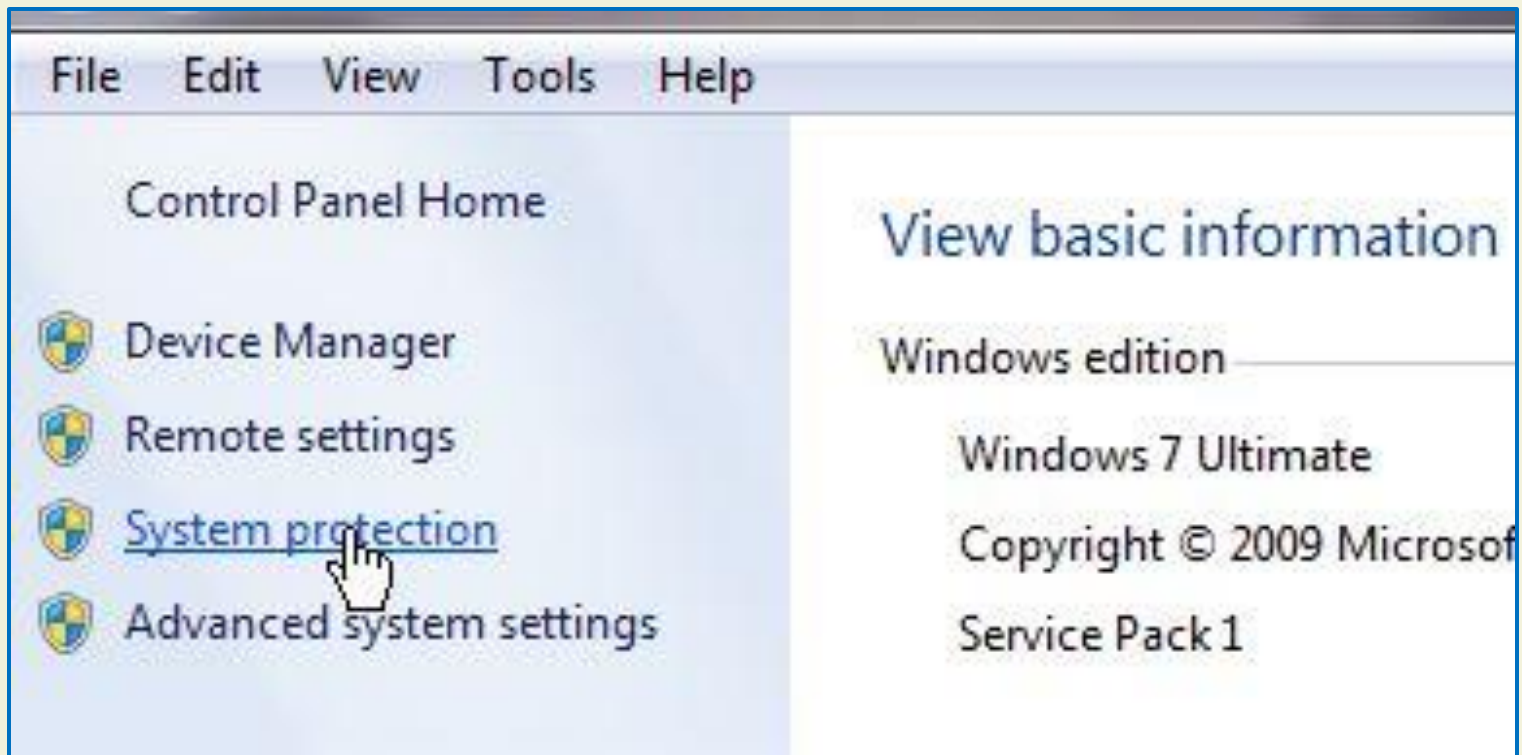
847-687-1329

johnlorens@gmail.com

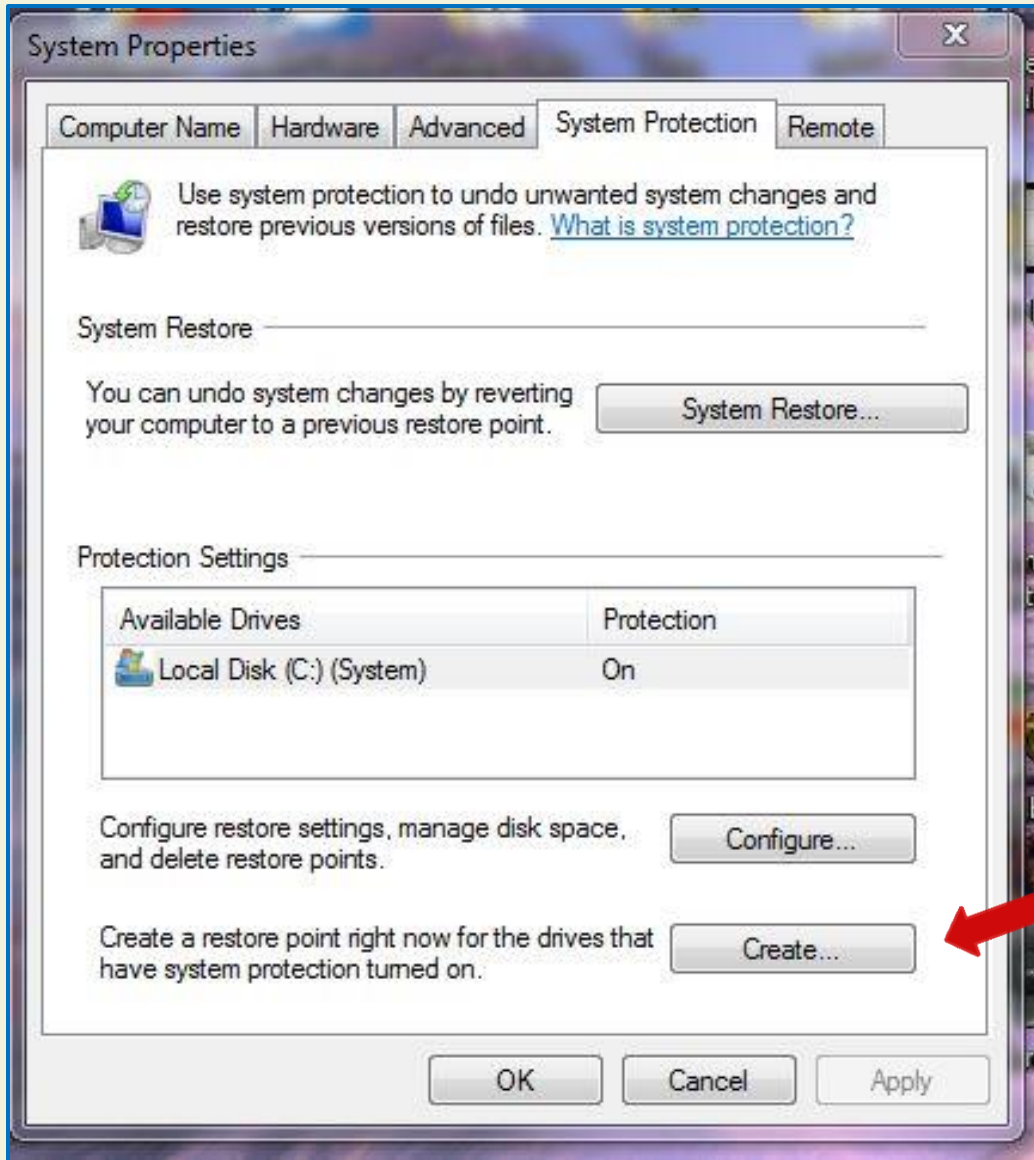
Begin by
Right-click on
Computer to pull-up
the shortcut list,
then Left-click on
Properties.

If you don't have Computer
icon shown on your
desktop, then click on **Start**
and see **Computer** on the
right side listing. Right-click
on Computer, then left-click
on **Properties**





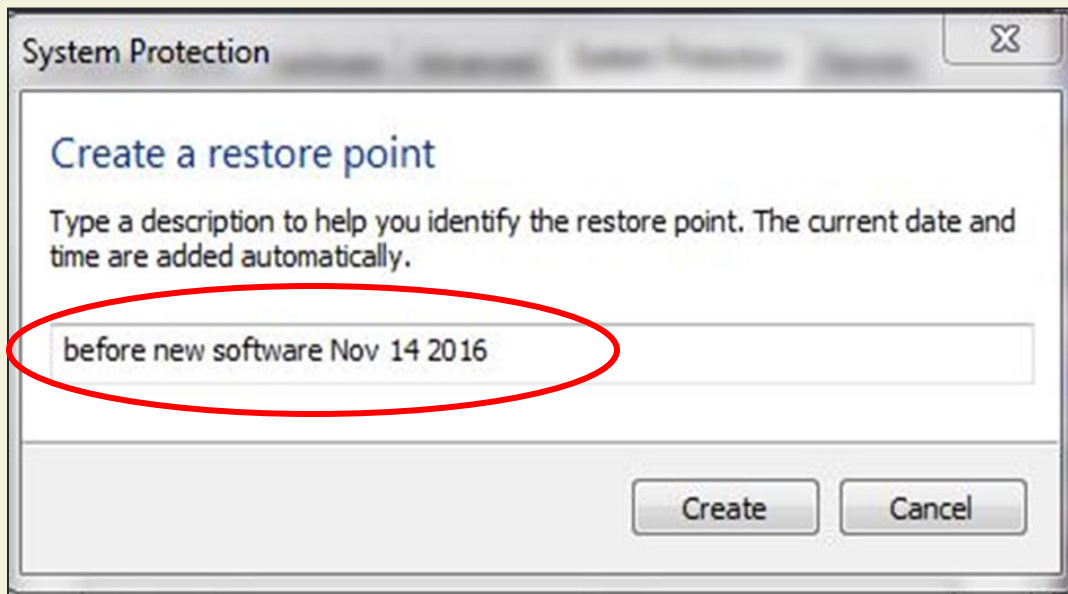
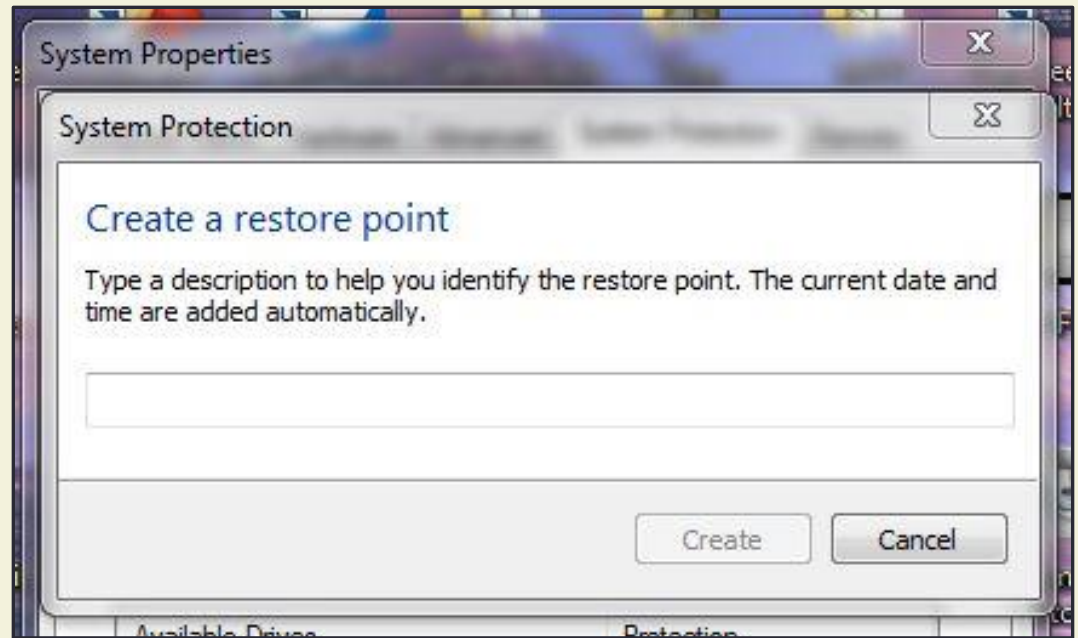
This brings up the Computer Properties window.
Click on **System Protection**



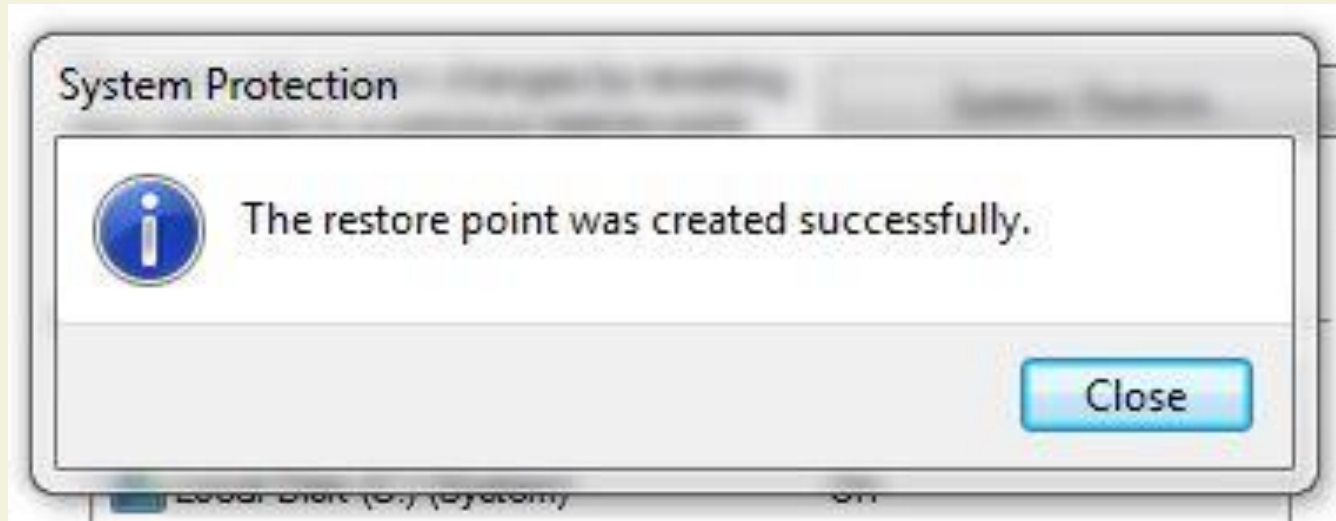
System Properties window is displayed, with the System Protection tab already selected. *Click* on the **Create** button below to begin the Restore process.



This brings up a place where you can create a new “restore point”. The restore point will capture computer & software settings at this point in time.

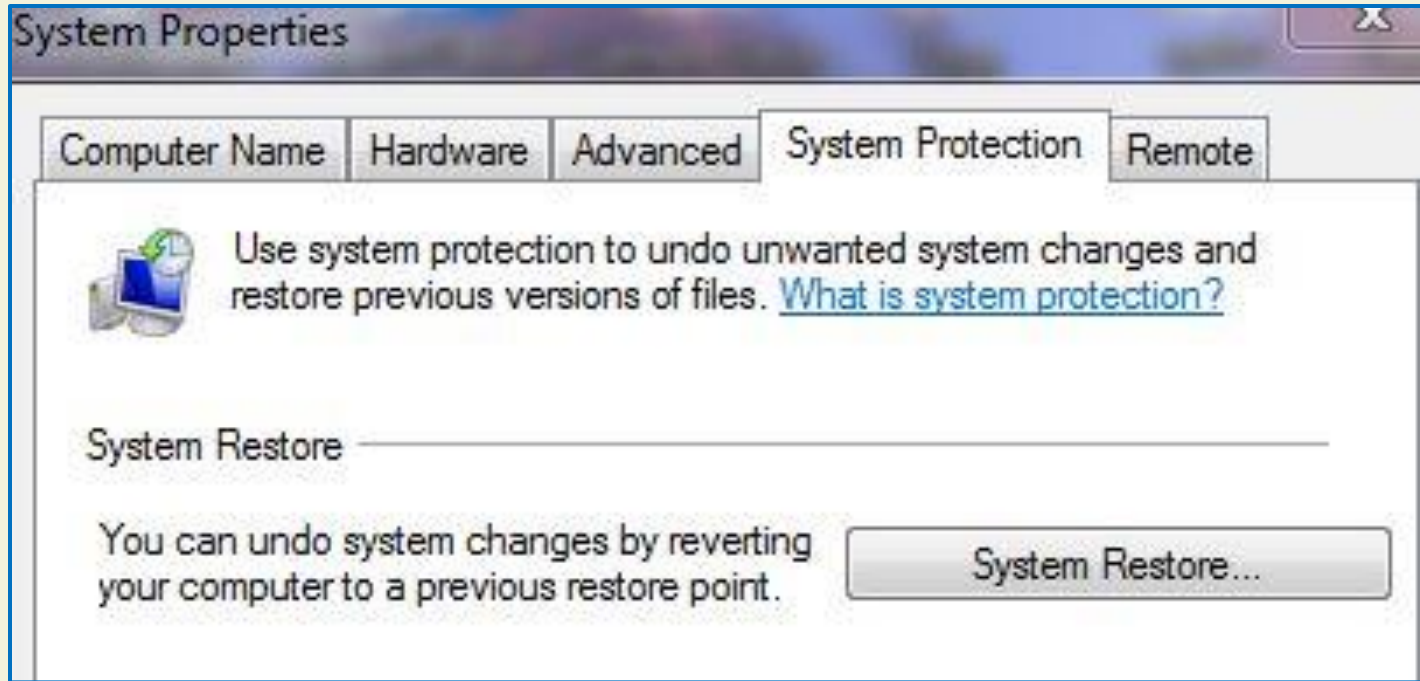


Name this restore point with some meaningful description. I always date it even though the point is dated in the final list. Then click on **Create** and wait a few seconds for this point in time to be created, like a snapshot.



When the process is completed, you will get this display. The computer overall configuration and software settings are saved. Then if new software or driver changes are made which make your computer unstable, you can Restore it back to this point in time when all was good.

Restore Points do not deal with your Documents, Pictures, Music, etc. So if you added new docs and then had to **Restore** to an earlier computer configuration, the documents remain in tact.

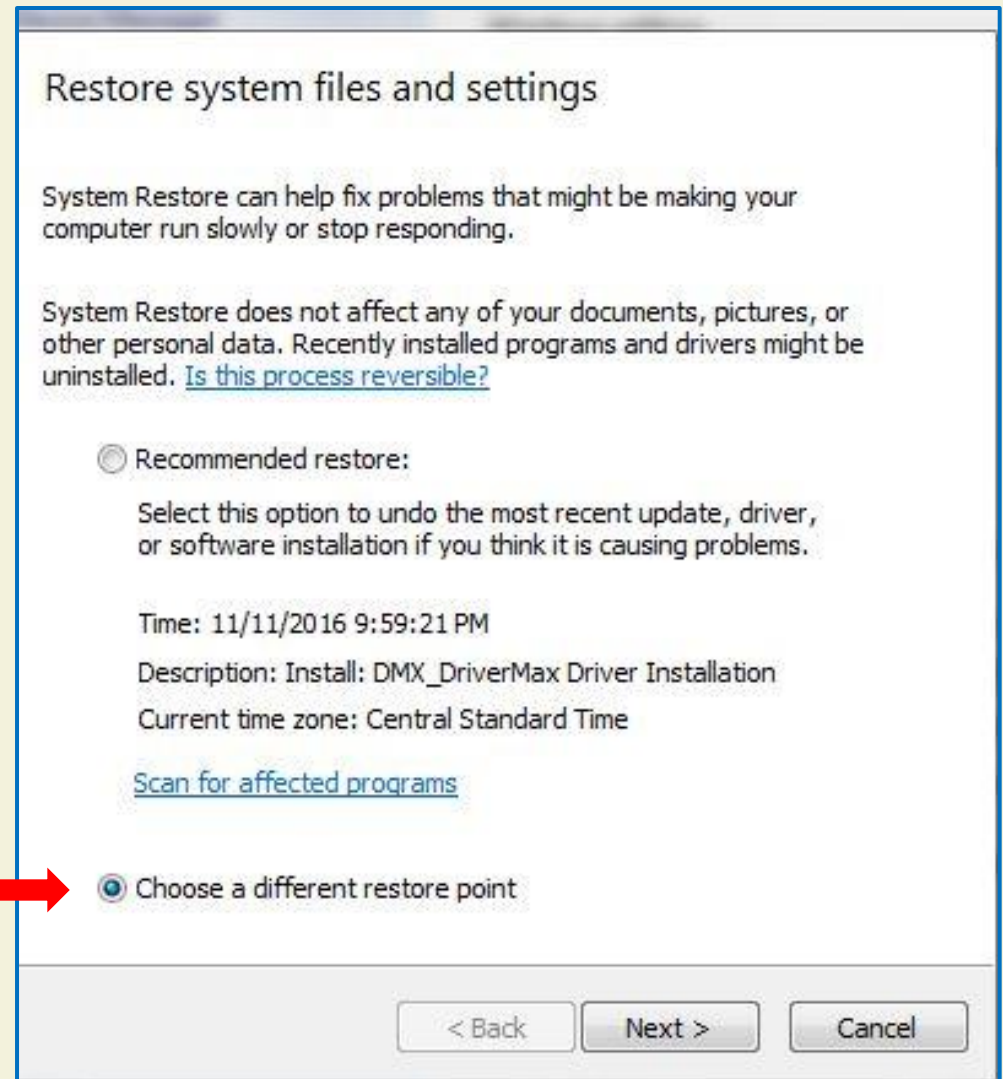


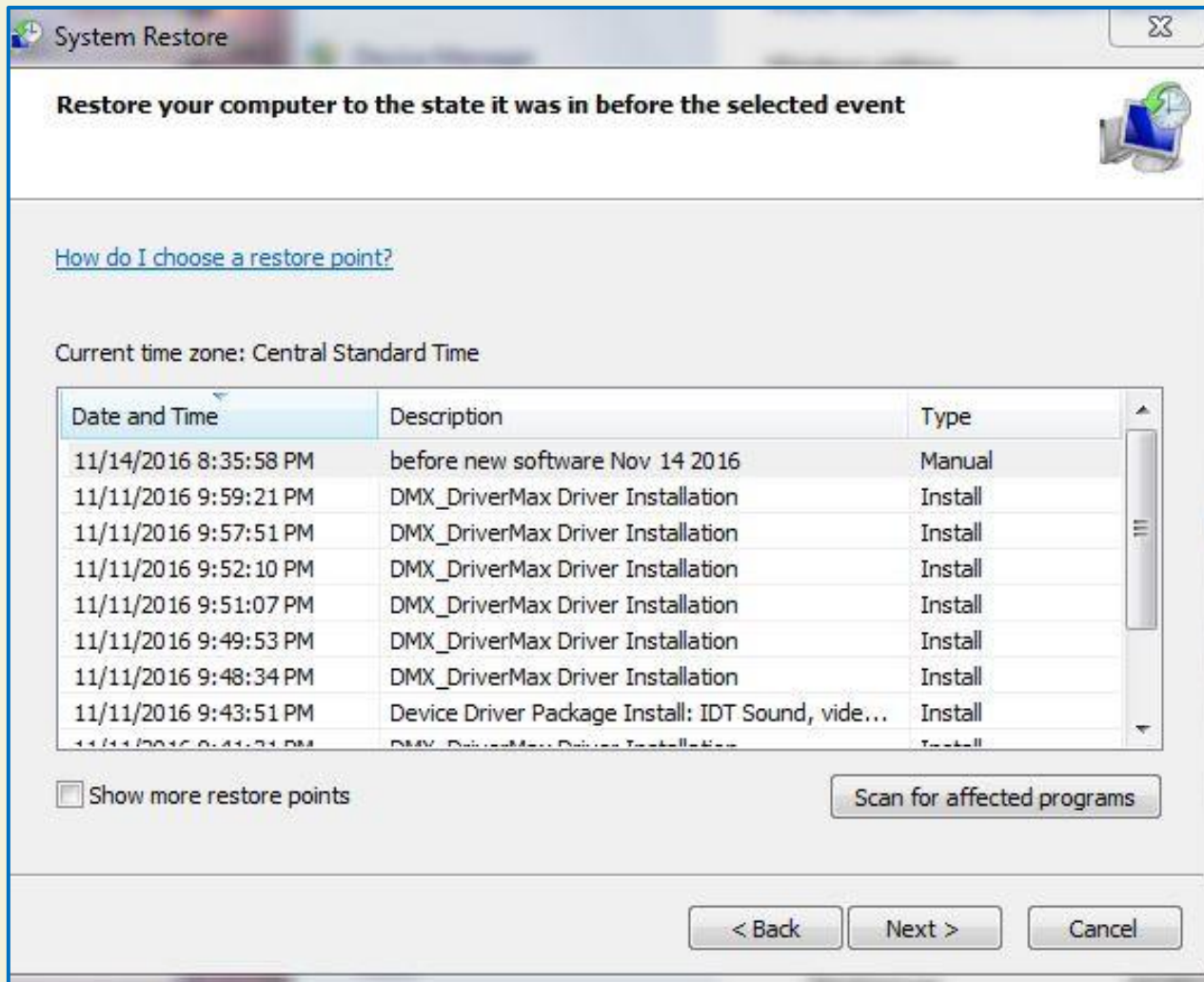
To retrieve an earlier Restore Point, you get to this screen in the same way as before.

Right-click on **Computer**, Left-click on **Properties**.
Then click on **System Restore** to bring up a list of all the previous Restore Points in the system.

By default, this window will have Recommended restore selected.

I usually click on the Choose a different restore point so I can select which point in the past I want to go back to.





You'll see a list of Restore Points, some you created, others created by automatically by new software or Microsoft updates. *Click* on the Restore Point you want, *click* **Next**, and watch your computer go Back in Time.